



1. **Introduction:**

A. Proud Owner:

. You are now the proud owner of a Bro-Tek Wheel Spacers. These Wheel Spacers are made for your Kubota tractor Front axle. It will outlast your original Kubota tractor & be ready for your next one. Please read these instructions, before installing the Wheel Spacers. The Wheel Spacers have been designed for easy installation on your Kubota. Wheel Spacers are a bolt-on item. Unit will be shipped complete in a box, all hardware included. Designed to be very easy to be installed.

⚠ Important If you have a Mid Mount Mower , the wheel will be push out & may contact.

B. Feedback:

. We would love any feedback that you could give us (Positive/Negative), to improve our product line. Please email us your comments/pictures too: bro-tek@hotmail.com or you can reach us at www.bro-tek.com

2. **Safety Precautions:** **⚠ Important Safety**

- A. Park on a firm level area.
- B. Stop engine, set brake, remove key and wait for all moving parts to stop before servicing, adjusting or unplugging.
- C. Block up before working beneath unit.



www.bro-tek.com

BRO-TEK
-Making tractors parts our business

B series/Front Wheel Spacers M12



bro-tek@hotmail.com

3. Tools/torque/Parts required:

- A. **Socket** 24mm, 3/4" & 11/16"
- B. **Torque wrench** (capacity rating range 0-120 Lb-Ft).
- C. **Floor Jack & Jack stands.**
- D. 2x4 lumber or round pipe (see pic below).
- E. Loctite, Medium Strength Thread locker (Blue)

4. Assembly Instructions:

A. Once you have followed the safety precautions & have removed the Wheel Spacers from its packaging, please take notes of all the parts & follow the assembly instruction.

B. Free up work place of all disturbances & clutter. Take your time installing it (This can be easily be done by one person in 20 to 25 minutes).

C. Before lifting, with the jack, the tractor, break loose the nuts on the front wheels, this will help out.

D. If you have the Front end Loader on, save yourself some time & use it to lift the front. For those without a backhoe, jack up & place the jack stand on the axle tractor.

⚠ Jack stands must be stable/secure place on the tractor/ground

E. It's now the time to remove the tire.

⚠ **Caution** if you have loaded tires and haven't taken them off before then beware they can be VERY heavy. Make sure that the jack stands are stable before removing the wheel.

F. Now is a good time to test fit the spacer to the Axle & then to the wheel rim.

The spacer should make full contact to the axle & make sure that spacer makes full contact on the inside of the rim. It's much easier to sort any problems without having anything bolted down. If

everything looks good add some Loctite to 6 studs ⚠




www.bro-tek.com

Bro-Tek
-Making tractors parts our business


B series/Front Wheel Spacers M12



bro-tek@hotmail.com

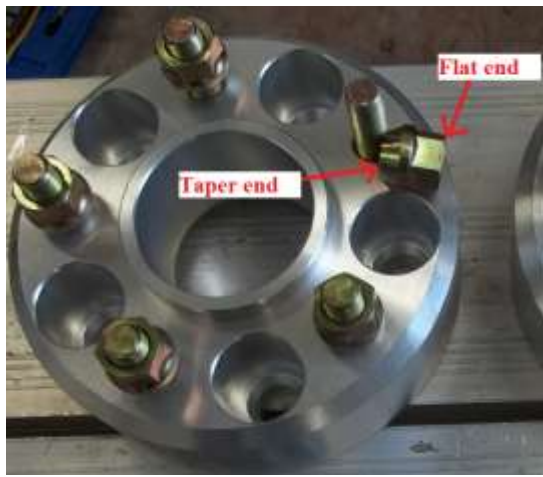
G.To install the spacers, you will need a long bar or a piece of 2x4 works well to hold the axle from turning (see photo)be  careful not to damage the wheel spacers stud tread (a Wooden bar or a rag/rubber around the steel bar will help protect the treads,






Use the supplied  tapered nut, make sure only tapered nuts are to be used to install the spacers to the axle.

The factory Stud treads are 12mmx1.25 tread. We have supplied new Taper Lug nut 12mmx1.25(Gold)use these to install the spacer to the axle.

 Taper ends must make contact with the spacers.



 Please take the time to make the install/Torque bolt in a 3 steps.

Save these  Instructions/Safety Manual  owner/operator/installer



www.bro-tek.com

Bro-Tek
-Making tractors parts our business

B series/Front Wheel Spacers M12




bro-tek@hotmail.com

First hand tighten the bolts; Second torque the bolts to half the torque in a crisscross/Star pattern & Finally torque the bolt to their final value of 70 ft. lbs for the spacers to the axle.




H. Get your socket & add Loctite to the 5 studs on the spacer.

Reuse the factory nut  & reuse the factory washer that was on the Wheel. Torque the nuts to 70 ft. lbs for the rim in the same 3 steps as above.

I. Check clearances around the Wheel, no point of contact should be noticed. Make sure to fully turn the steering left/right.

J. Check everything out for clearances & binding. Recheck nuts & bolts after the first 2 hours of travel & at your regular oil change.

 A low speed test drive on a bumpy terrain with steering fully rotated should reveal any binding problem area. Make sure to **correct the problem before any other driving.**

5. **Congratulations:**

You have successfully installed your Bro-Tek Wheel Spacers. I hope this was a pleasant experience & that you would recommend this product to all of your tractor friends. The Wheel Spacers can remain on the Tractor for all the preventative maintenances & the everyday use.

6. **Thank you:**

We would like to thank you for supporting us & hope to do future business with you with our new upcoming line of products.