



www.bro-tek.com



-Making tractors parts our business

MODEL# BX-G



bro-tek@hotmail.com

Series; **BX22,BX23,BX24,BX25,BX1500,BX18/00/30/50/60/80,BX22/00/30,BX23/50/60/80 & BX26/60/70/80**

1. Introduction:

A. Proud Owner:

- . You are now the proud owner of a Bro-Tek Steering Guard. This guard are made of 3/8" steel plate. It will outlast your original Kubota tractor & be ready for your next one. Please read these instructions before installing the guard. These have been designed for easy installation & pre-painted with a very durable paint (Dupli-Color/High Perf Graphite Wheel).

B. Feedback:

- . We would love any feedback that you could give us (Positive/Negative) in order to improve our product line. Please email us your comments/pictures too:
bro-tek@hotmail.com or visit our web site www.bro-tek.com

2. Safety Precautions:  **Important Safety**

- A. Park on a firm level area.
- B. Stop engine, set brake, remove key and wait for all moving parts to stop before servicing, adjusting or unplugging.
- C. Secure the Front-end loader.

3. Tools/torque/Parts required:

- A. Wrenches or socket (11/16"@40Lb-Ft)
- B. Torque wrench (22 to 115Lb-Ft).
- C. Blue Loctite





www.bro-tek.com

Bro-Tek
-Making tractors parts our business

MODEL# BX-G



bro-tek@hotmail.com

Series; **BX22,BX23,BX24,BX25,BX1500,BX18/00/30/50/60/80,BX22/00/30,BX23/50/60/80 & BX26/60/70/80**

What in the Kit & what is not in the kit:

In the kit will be 4 bolts & the 2-plate guard.



Not in the Kit;The Top-link & pins, in the red circle below.



The guard is built to accept the factory OEM Top-link, which comes with the tractor 3-point kit, using 4"- $\frac{3}{4}$ " pins & clips. Our Tool box will also bolt-on, instead of the Top-link, to act as a sacrifice piece. Tool box is great to carry chains, tools or Top-link.

Save these  Instructions/Safety Manual  owner/operator/installer



www.bro-tek.com

Bro-Tek
-Making tractors parts our business

MODEL# BX-G



bro-tek@hotmail.com

Series; **BX22,BX23,BX24,BX25,BX1500,BX18/00/30/50/60/80,BX22/00/30,BX23/50/60/80 & BX26/60/70/80**

4. Assembly Instructions: **⚠ Important Safety**

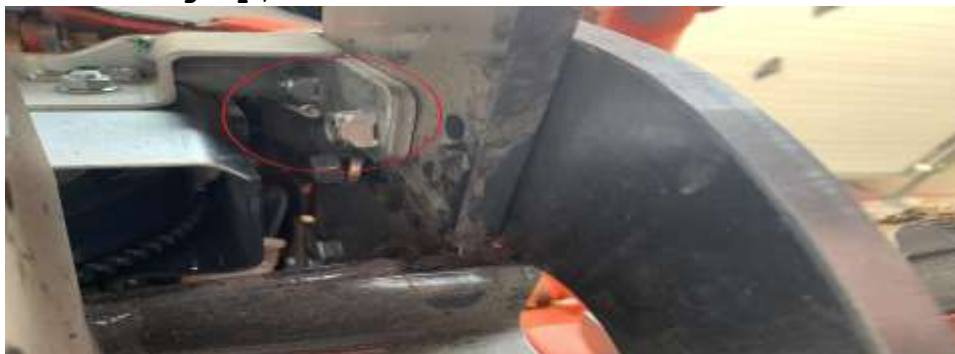
.1 Once you have followed the safety precautions & have removed the guard from its packaging, please take note of all the parts & follow the assembly instructions.

.2 Free up the work place of all disturbance & clutter. Take your time installing it (This can be easily done by one person in 10 to 20 minutes).

.3 There's 2 bolts per side on the side of the frame, remove these. shown in the photos below.



.4 Take one of the 3/8" plate and use one of our supplied bolts, which are longer than the OEM. Put Loctite on & use the Top bolt first, the nut is pre welded behind the frame. Photo below is looking up, from under the frame.



Save these **⚠** Instructions/Safety Manual **⚠** owner/operator/installer



www.bro-tek.com

Bro-Tek
-Making tractors parts our business

MODEL# BX-G



bro-tek@hotmail.com

Series; **BX22,BX23,BX24,BX25,BX1500,BX18/00/30/50/60/80,BX22/00/30,BX23/50/60/80 & BX26/60/70/80**

.5 The steering guard have 2 positions available. The lower bolt can be installed to move forward or backward, closer to the steering cylinder. Use the one that works best for your application (if using tool box, top-link or aftermarket add-on)

.6 Add Loctite to the bolt & torque the 2 bolts to 45ft/lb.

.7 Repeat the same for the other side.

5. **Congratulations:**

You have successfully installed your Bro-Tek Skid Plate. I hope this was a pleasant experience & that you would recommend this product to all of your tractor friends. The skid plate can remain on the tractor, for all the preventative maintenances & the everyday use.

6. **Thank you:**

We would like to thank you for supporting us & hope to do future business with you with, our new upcoming line of products.

Over the years, we have heard horrors stories;

There's multiple reason to have the Bro-Tek steering guard Rolling rock can hit the hydraulic cylinder, which is right in the front of the tractor. The seals or complete unit has to be replaced.

The steering guard can be used for tie down on a trailer.



www.bro-tek.com

Bro-Tek
-Making tractors parts our business

MODEL# BX-G



bro-tek@hotmail.com

Series ; **BX22,BX23,BX24,BX25,BX1500,BX18/00/30/50/60/80,BX22/00/30,BX23/50/60/80 & BX26/60/70/80**

As far as "The Tool box" is simple to build, but it mounts on the steering guard, so you must purchase the steering guard first. The tool box is a simple 4" ABS pipe with end caps, so easy for you to make.



Save these  Instructions/Safety Manual  owner/operator/installer